



**BLUEART GRANITO PVT. LTD.**

Paneli Road, 8-A, National Highway,  
Nr. Dariyalal Resort, Morbi – 363 642 (Guj. INDIA.)

C : +91 – 89800 00211  
+91 – 89800 00215

E : sales@blueart.in  
bhavesh@blueart.in

**Export Inquiry**

C : +91 – 89804 75947  
+91 – 89800 00604

E : expo@blueart.in



BALANCE  
NATURE &  
BEAUTY  
WITH BLUEART





# Clay Art.

## ABOUT US...

Blueart was founded in 2010. It manufactures products with a high technological content paying particular attention to the impact on the environment.

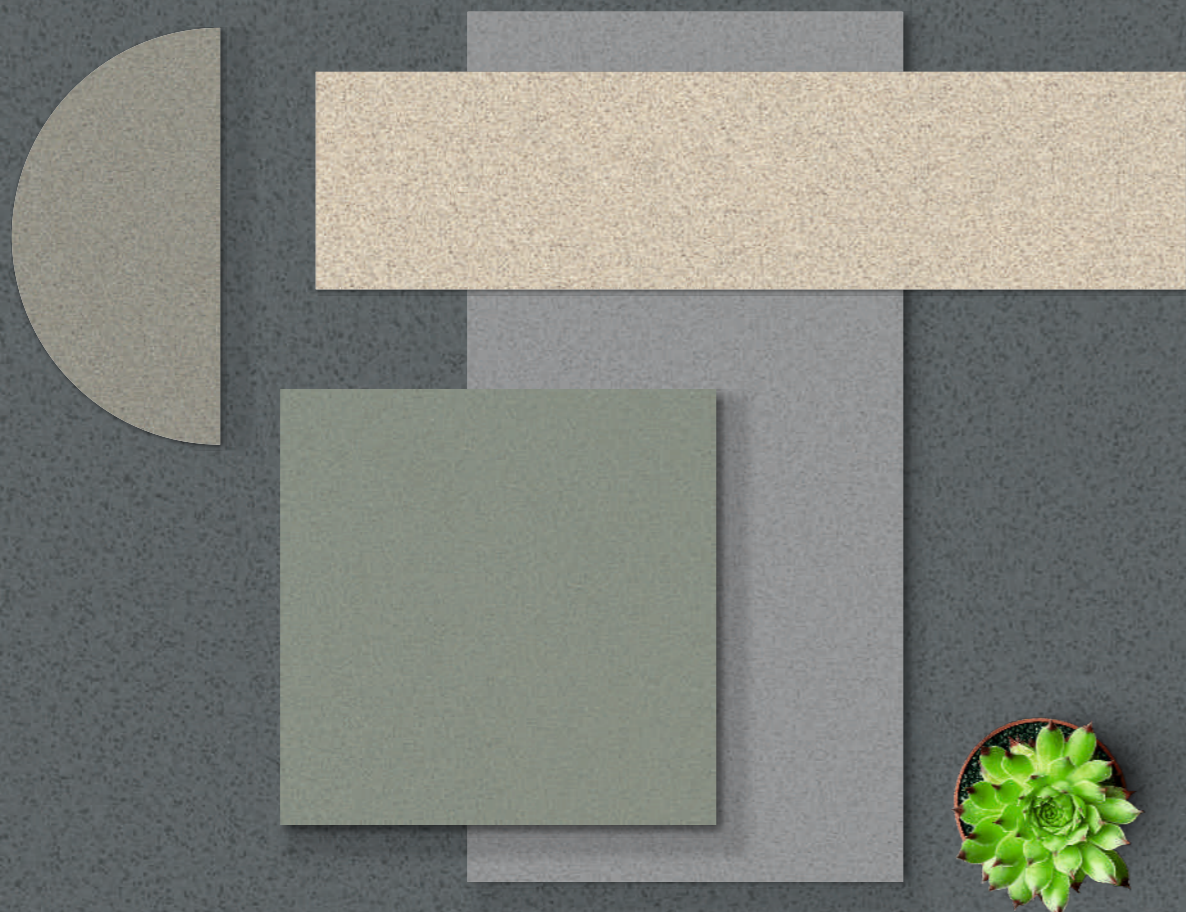
The company's added value is represented by the following international certifications: ISO 9001, ISO 14001, ISO 45001, CE.

### **Blueart the beating heart of cutting-edge technology since 2011.**

High quality combined with unrivalled technology has enabled us to re-interpret some of the rarest, most refined and valuable products of nature, while also enhancing their technical and qualitative properties, saving many of these materials from oblivion. In this way, Blueart allows you to appreciate and take full advantage of some of the most prized materials available. Other hallmarks include exceptional functionality, hygiene, safety and long-lasting durability. The concept of the material is new and constantly being developed upon in the search for ultimate quality.

Blueart technologies are unique: they are devised, designed and implemented directly in-house at the company's own sites,

**FULL  
BODY**  
VITRIFIED TILES



**AVAILABLE FORMAT**

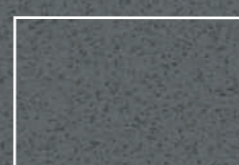


600 x 600 mm



600 x 1200 mm

**SHAPE CUSTOMIZE**

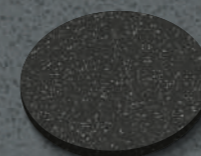


ANTI SLIP

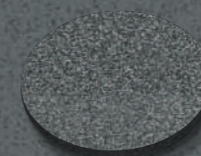
FULL BODY



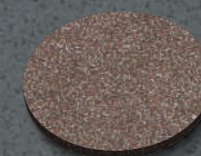
**Sandy Series Color Range**



BLACK



NERO



CHOCO



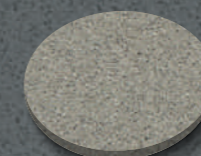
COPPER



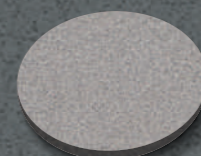
COOKIE



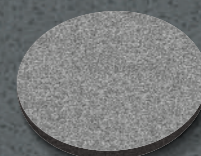
KOTA



VERDE



MOCHA



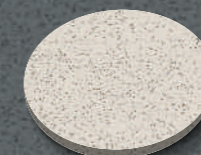
MIST



DOVE



BEIGE



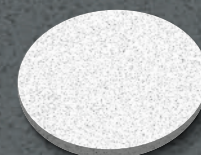
CREMA



PEARL



ALPINE



WHITE



BIANCO

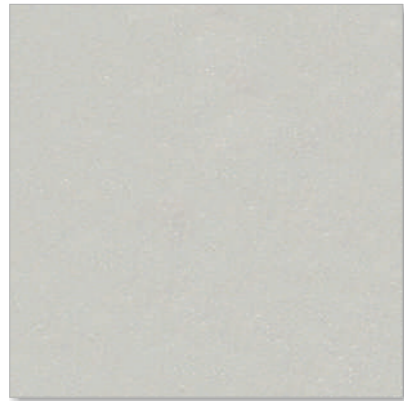
## Light Series

**SANDY CREMA**



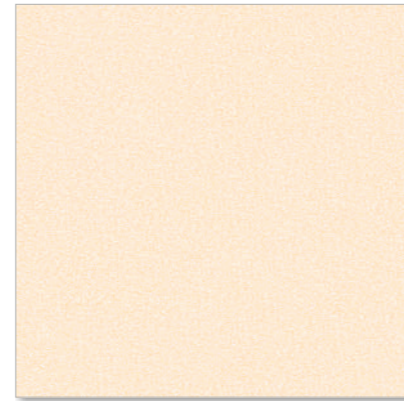
Surface  
Satin / Polish

**SANDY DOVE**



Surface  
Satin / Polish

**SANDY BEIGE**



Surface  
Satin / Polish

**SANDY PEARL**

Light Series



Surface  
Satin / Polish

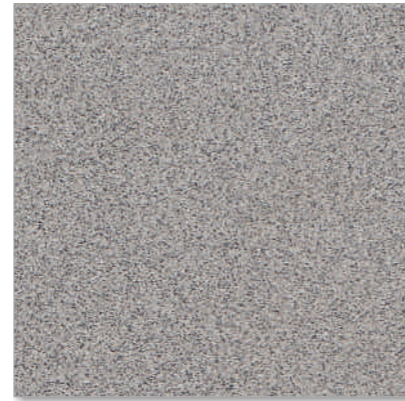
**SANDY COOKIE**

Light Series



Surface  
Satin / Polish

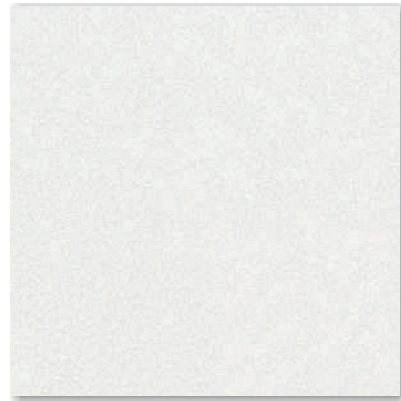
**SANDY MOCHA**



Surface  
Satin / Polish

**SANDY BIANCO**

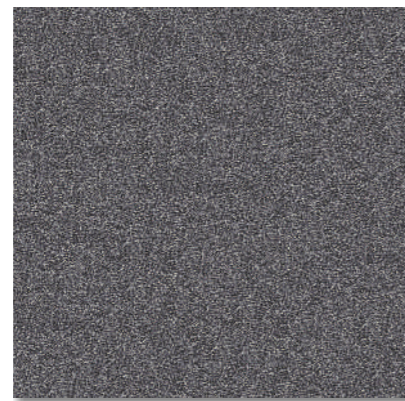
Light Series



Surface  
Satin / Polish

**SANDY MIST**

Light Series



Surface  
Satin / Polish

## Dark Series

**SANDY CHOCO**



Surface  
Satin / Polish

**SANDY COPPER**



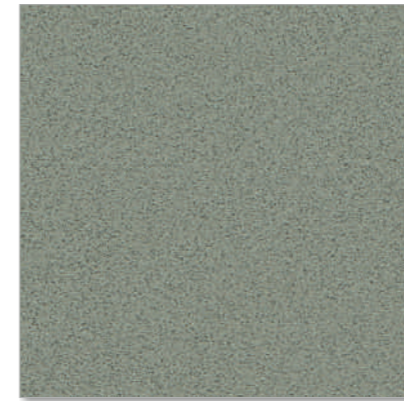
Surface  
Satin / Polish

**SANDY NERO**



Surface  
Satin / Polish

**SANDY KOTA**



Surface  
Satin / Polish

**SANDY VERDE**



Surface  
Satin / Polish

## Special Series

**SANDY WHITE**

Special Series

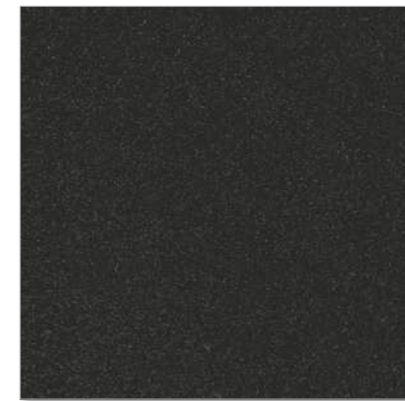


Surface  
Satin / Polish

## Super Special Series

**SANDY BLACK**

S.Special Series



Surface  
Satin / Polish

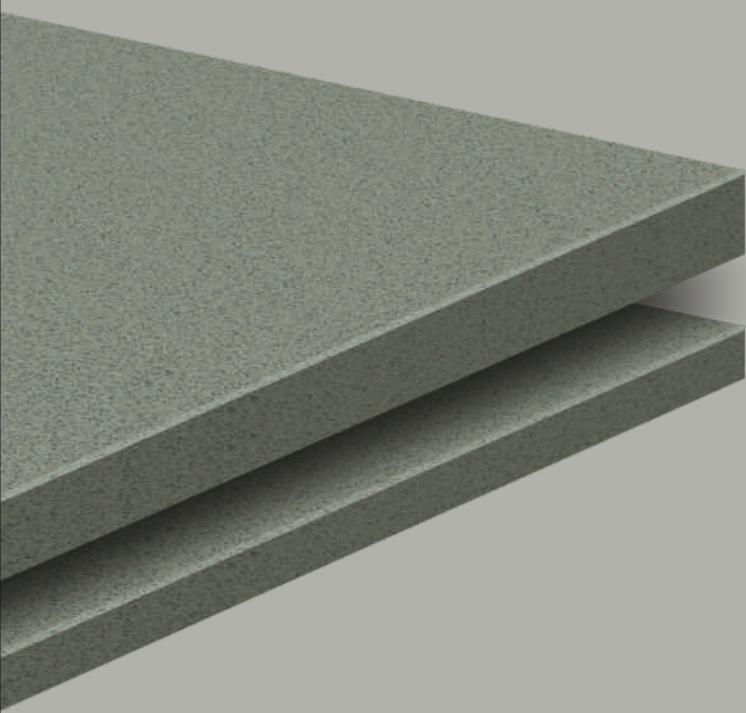
## Alpine Series

**ALPINE WHITE**

Light Series



Surface  
Satin / Polish



**THICKNESS**

← 15 mm

← 9 mm

**APPLICATIONS**



URBAN  
CENTERS



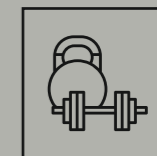
RESIDENTIAL  
CENTRES



KITCHENS



HOSPITALS



SPORT  
CENTRES



HOUSES  
INDOOR



CLINICAL



BATHROOMS



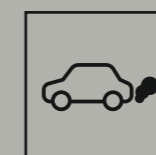
SPAS



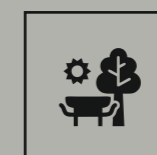
SHOPPING  
PLACES



EXTRENAL  
WALL COVERING



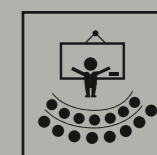
TRAFFIC  
AREAS



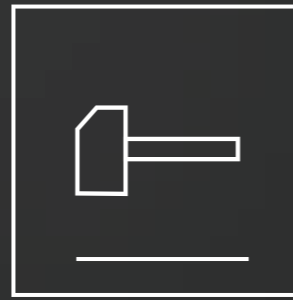
OUTDOOR



CENTRES FOR  
CHILDHOOD



SCHOOLS



### **Solid**

Solid, strong and uniform, it maintains its appearance even in the event of extreme wear and damage.



### **Safe, Clean, Fireproof**

Sanitisable, resistant to acid, easy to clean, does not burn and does not release harmful substances

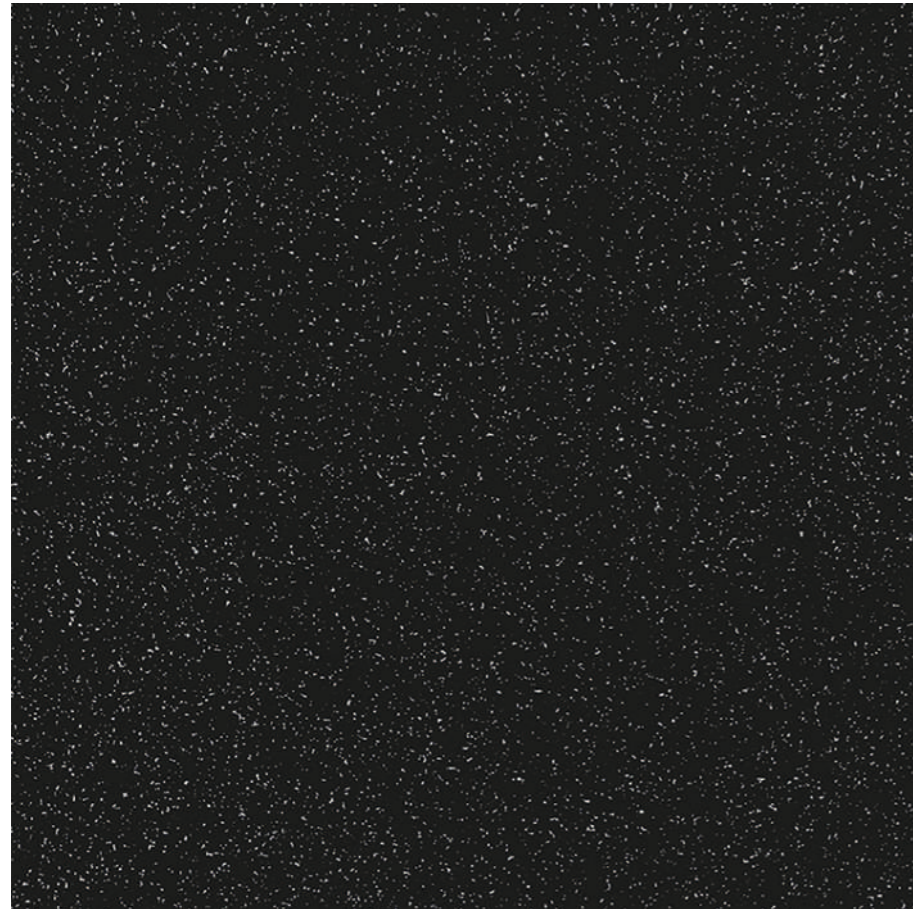


### **Highly Sustainable**

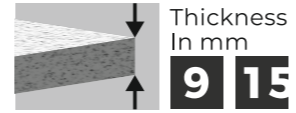
Porcelain stoneware reduced with maximum respect for the environment and for workers. Long-lasting and recyclable.

**SANDY BLACK**

**Super Special Series**



Surface  
**Satin / Polish**



FORMAT

600 x  
600 mm

600 x  
1200 mm



# SANDY BLACK

Available Surface

Satin / Polish



Floor Tiles



Wall Tiles



Gloss Finish



Matt Finish

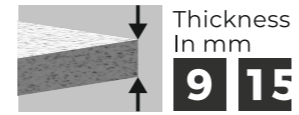


Water Proof



**SANDY CHOCO**

**Dark Series**



FORMAT

600 x  
600 mm

600 x  
1200 mm

Surface  
**Satin / Polish**





## SANDY CHOCO

Available Surface  
Satin / Polish



Floor  
Tiles



Wall  
Tiles



Gloss  
Finish



Matt  
Finish

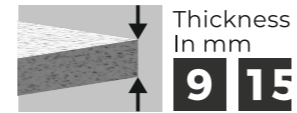
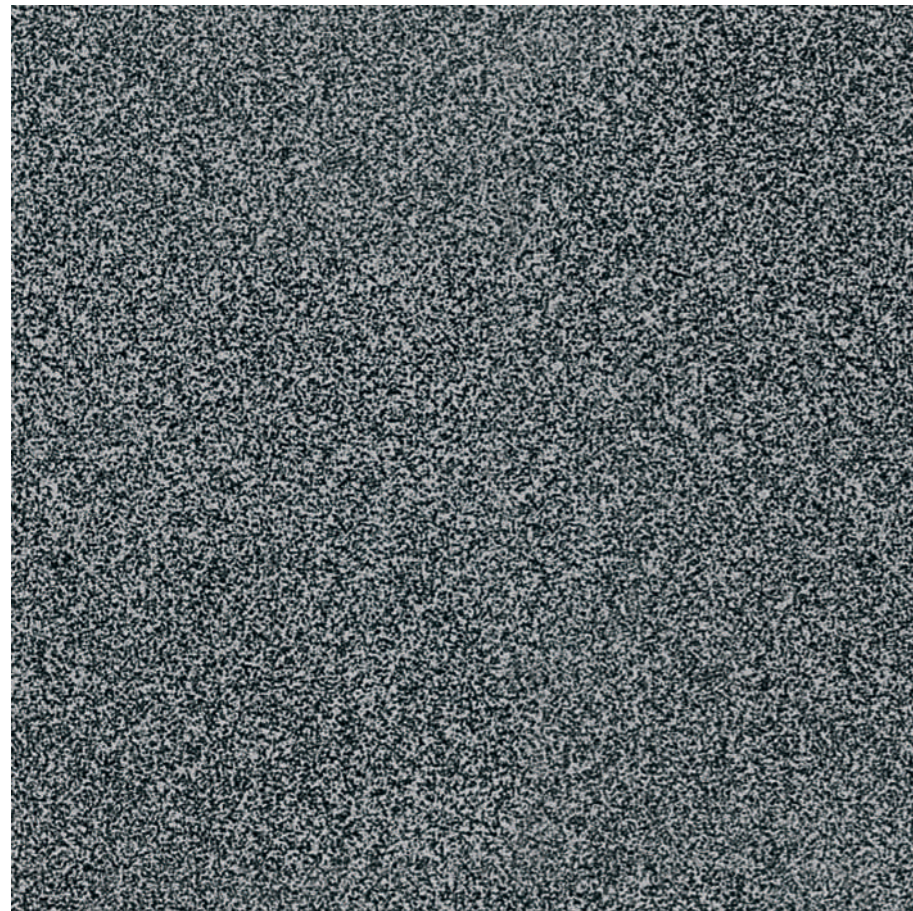


Water  
Proof

 **SANDY**  
Series

**SANDY NERO**

**Dark Series**



FORMAT

600 x  
600 mm

600 x  
1200 mm

Surface  
**Satin / Polish**



# SANDY NERO

Available Surface

Satin / Polish



Floor Tiles



Wall Tiles



Gloss Finish



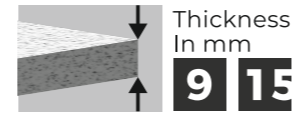
Matt Finish



Water Proof

**SANDY COPPER**

**Dark Series**



FORMAT

600 x  
600 mm

600 x  
1200 mm

Surface  
**Satin / Polish**

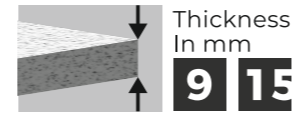
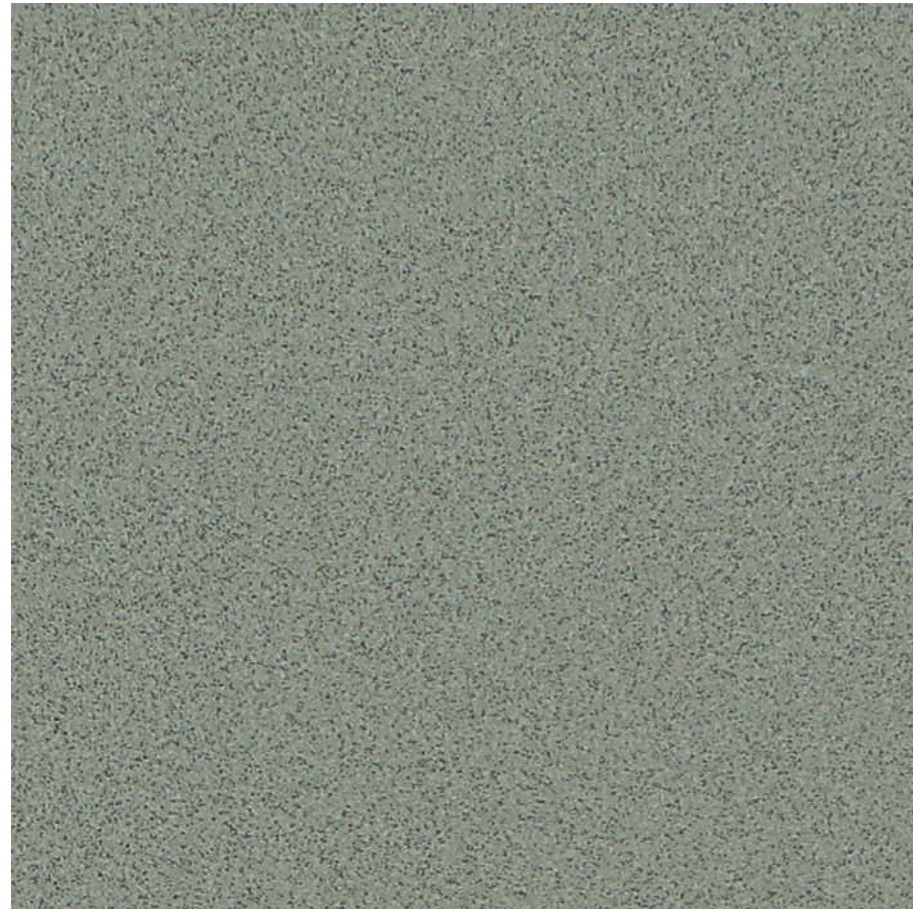




**SANDY COPPER**

**SANDY KOTA**

**Dark Series**



**FORMAT**

600 x  
600 mm

600 x  
1200 mm

Surface  
**Satin / Polish**





## SANDY KOTA

Available Surface  
Satin / Polish



Floor  
Tiles



Wall  
Tiles



Gloss  
Finish



Matt  
Finish



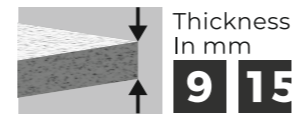
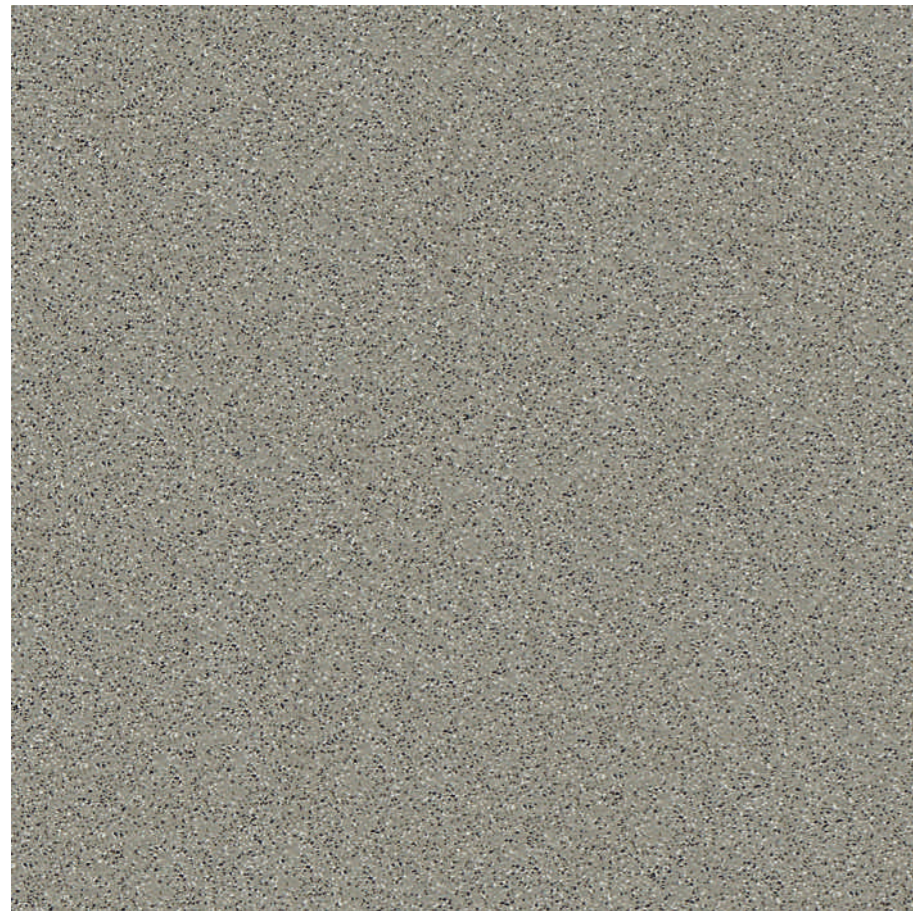
Water  
Proof

The logo for the SANDY Series, featuring a stylized hourglass icon to the left of the word "SANDY" in a bold, sans-serif font, with the word "Series" in a smaller font below it.



**SANDY VERDE**

**Dark Series**



FORMAT

600 x  
600 mm

600 x  
1200 mm

Surface  
**Satin / Polish**



# SANDY VERDE

Available Surface

Satin / Polish



Floor  
Tiles



Wall  
Tiles



Gloss  
Finish



Matt  
Finish

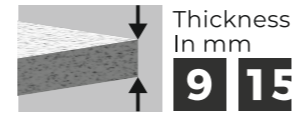


Water  
Proof

The logo for the SANDY Series, featuring a stylized hourglass icon to the left of the word "SANDY" in a bold, sans-serif font, with the word "Series" in a smaller font below it.

**SANDY COOKIE**

**Light Series**



FORMAT

600 x  
600 mm

600 x  
1200 mm

Surface  
**Satin / Polish**



# SANDY COOKIE

Available Surface

Satin / Polish



Floor Tiles



Wall Tiles



Gloss Finish



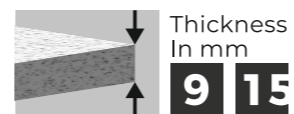
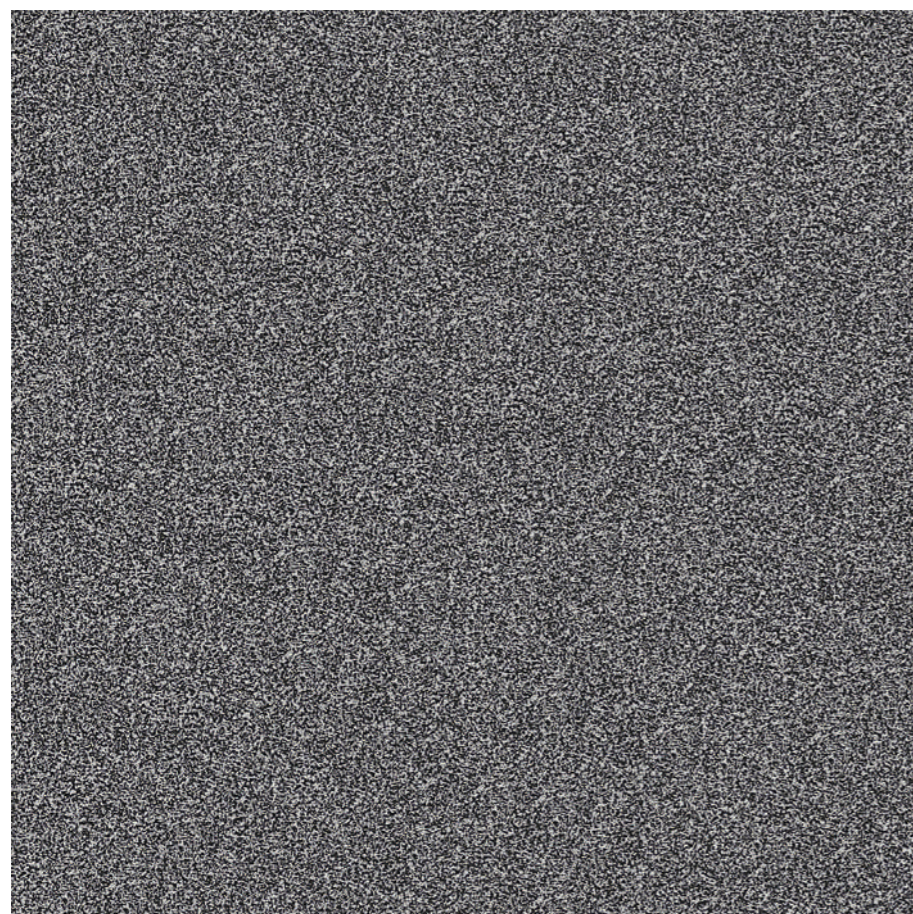
Matt Finish



Water Proof

**SANDY MIST**

**Light Series**

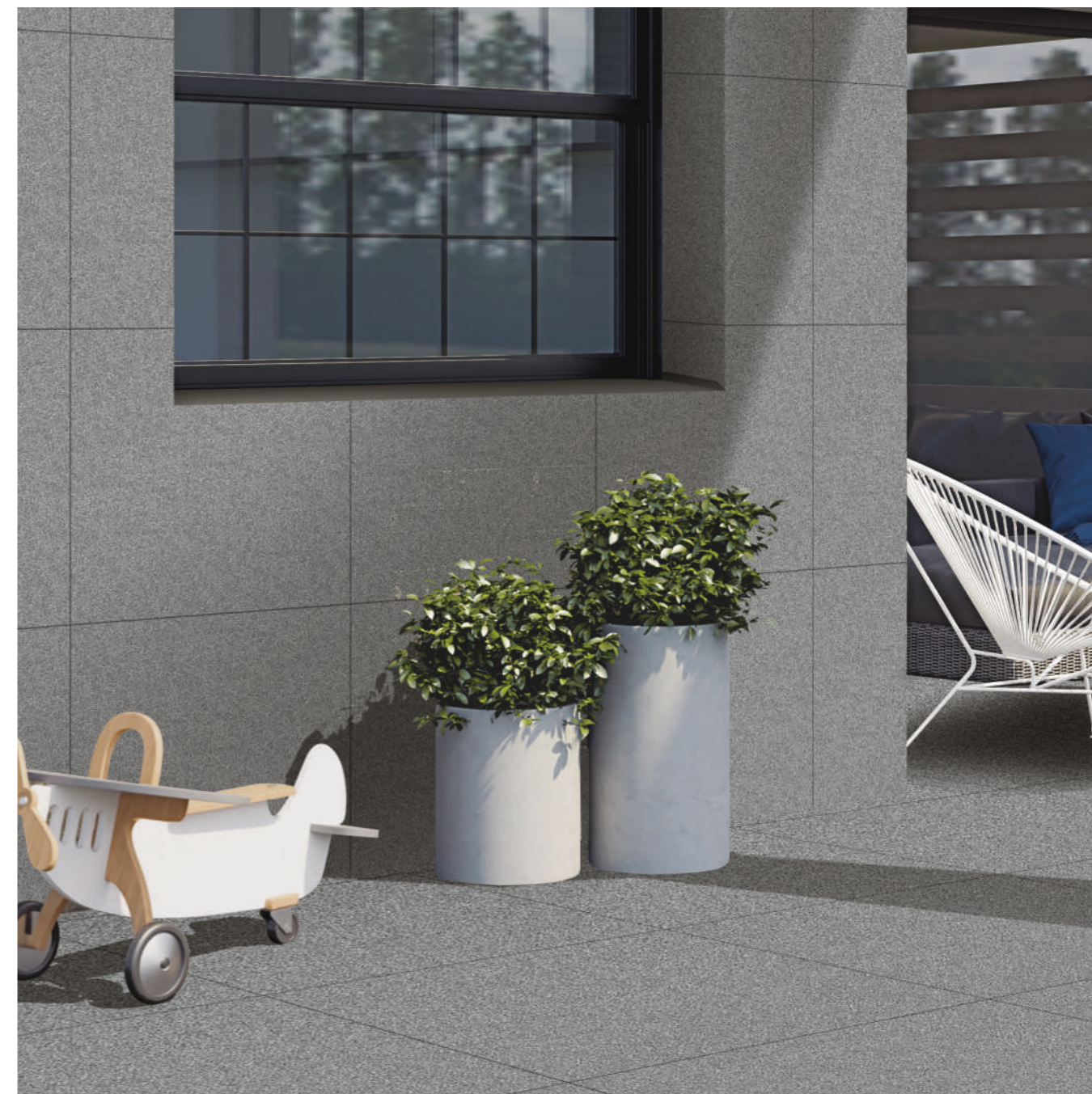


FORMAT

600 x  
600 mm

600 x  
1200 mm

Surface  
**Satin / Polish**



# SANDY MIST

Available Surface

Satin / Polish



Floor Tiles



Wall Tiles



Gloss Finish



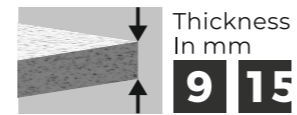
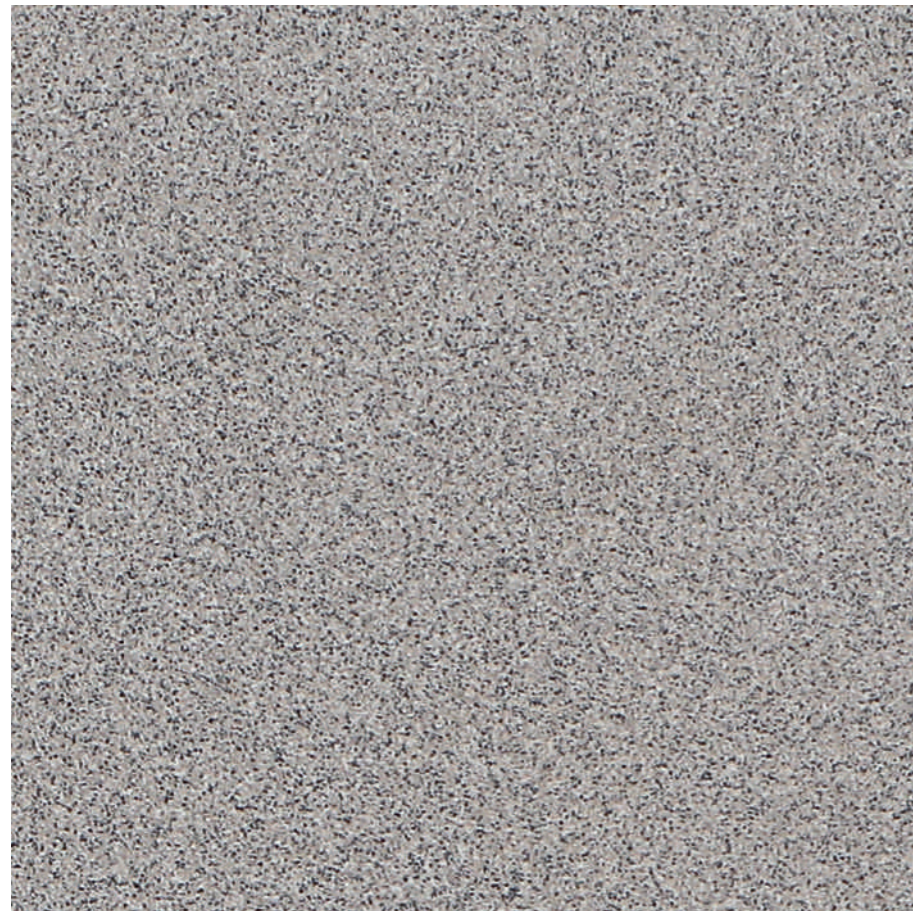
Matt Finish



Water Proof

**SANDY MOCHA**

**Light Series**



FORMAT

600 x  
600 mm

600 x  
1200 mm

Surface  
**Satin / Polish**





## SANDY MOCHA

Available Surface  
Satin / Polish



Floor  
Tiles



Wall  
Tiles



Gloss  
Finish



Matt  
Finish



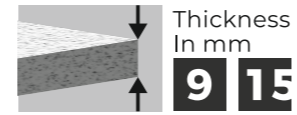
Water  
Proof

 **SANDY**  
Series



**SANDY PEARL**

**Light Series**



FORMAT

600 x  
600 mm

600 x  
1200 mm

Surface  
**Satin / Polish**

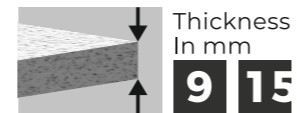




**SANDY PEARL**

**SANDY DOVE**

**Light Series**



FORMAT

600 x  
600 mm

600 x  
1200 mm

Surface  
**Satin / Polish**

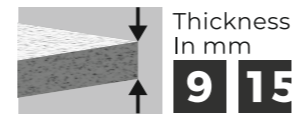




**SANDY DOVE**

**SANDY CREMA**

**Light Series**



FORMAT

600 x  
600 mm

600 x  
1200 mm

Surface  
**Satin / Polish**

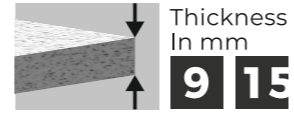




**SANDY CREMA**

**SANDY BEIGE**

**Light Series**



FORMAT

600 x  
600 mm

600 x  
1200 mm

Surface  
**Satin / Polish**





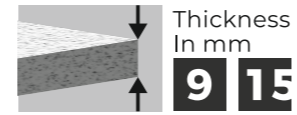
HOLIDAY  
RESORTS

**SANDY BEIGE**



**ALPINE WHITE**

**Alpine Series**



**FORMAT**

600 x  
600 mm

600 x  
1200 mm

Surface  
**Satin / Polish**



# ALPINE WHITE

Available Surface  
Satin / Polish



Floor  
Tiles



Wall  
Tiles



Gloss  
Finish



Matt  
Finish

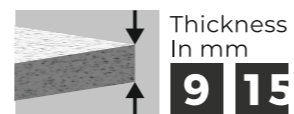
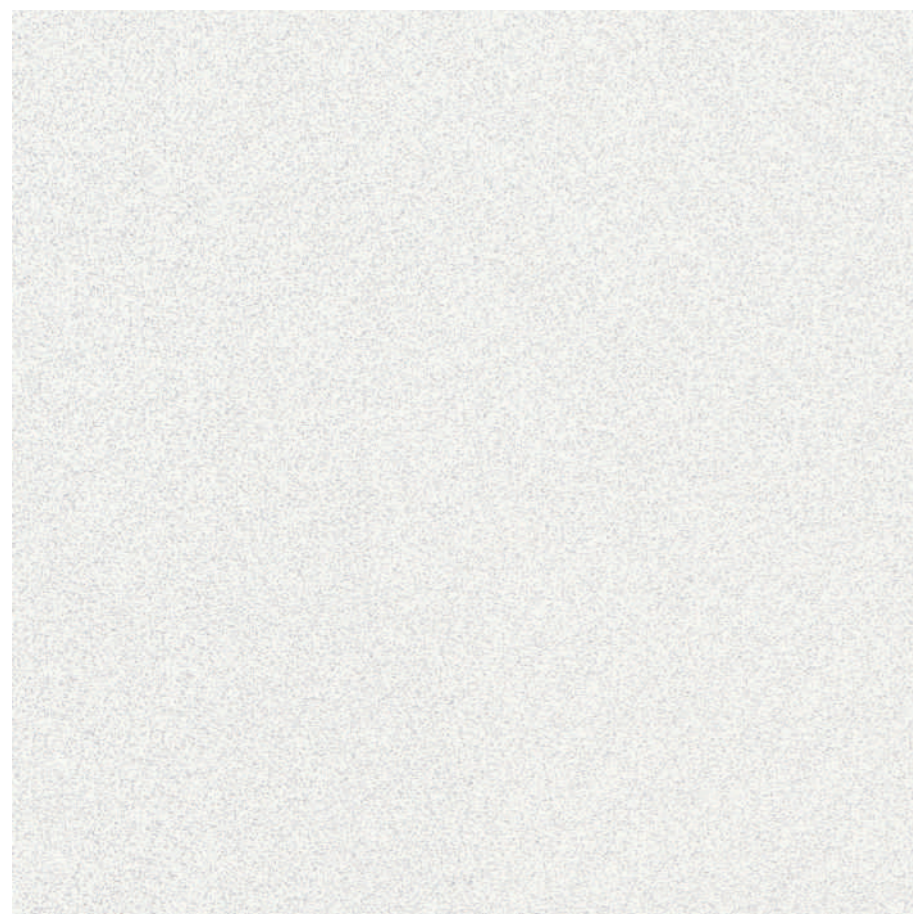


Water  
Proof

 **SANDY**  
Series

**SANDY BIANCO**

**Light Series**



FORMAT

600 x  
600 mm

600 x  
1200 mm

Surface  
**Satin / Polish**



# ALPINE WHITE

Available Surface  
Satin / Polish



Floor  
Tiles



Wall  
Tiles



Gloss  
Finish



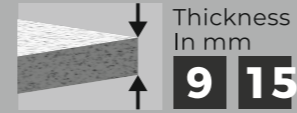
Matt  
Finish



Water  
Proof

**SANDY WHITE**

**Special Series**



FORMAT

600 x  
600 mm

600 x  
1200 mm

Surface  
**Satin / Polish**



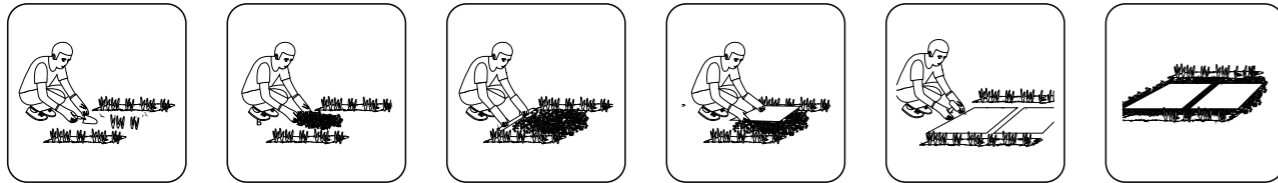


**SANDY WHITE**

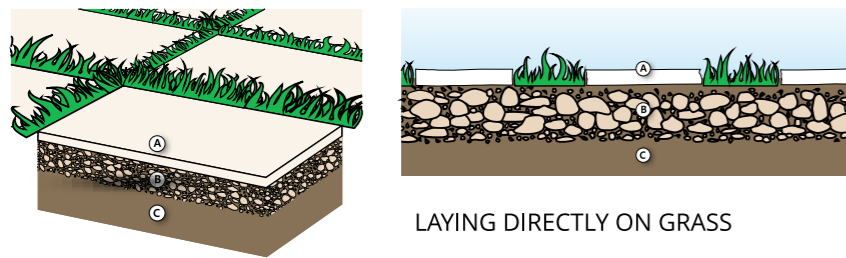
## Direct Installation On Grass

Ideal for: Gardens, gazebos, walkways.

- 1- Remove the soil below the area where the sheet will be laid to a thickness of about 5-6 cm
- 2- apply gravel to a thickness of about 3-4 cm and compact the foundation
- 3- Rest the sheets - with at least 1 cm of gap - on the gravel bed and use a rubber hammer to eliminate any unevenness.



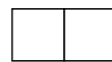
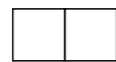
## Installation On Gravel And Sand



LAYING DIRECTLY ON GRASS

Laying With Close Joints

Laying With Close Joints

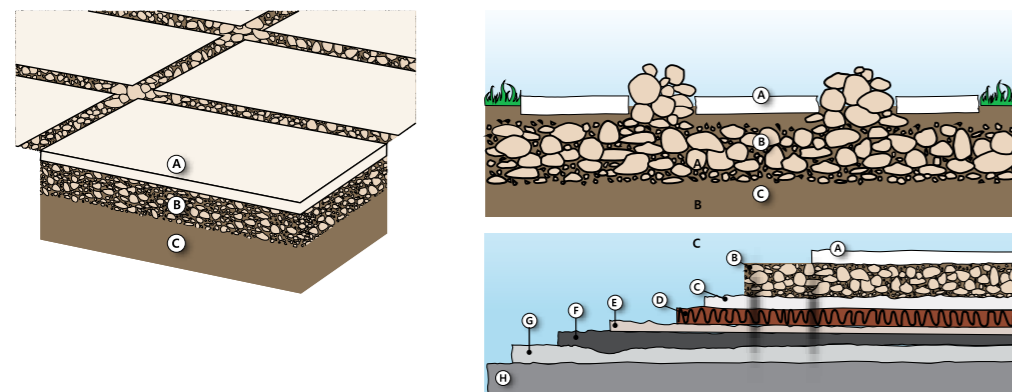


- A. Tile
- B. Fine gravel or sandy laying bed
- C. Ground

## Installation On Gravel And Sand

Ideal for: gardens, patios, courtyards, pedestrian walkways, beach resorts, perimeter areas in pools.

- 1- Compact the level of the resting layer (sand or gravel)
- 2- Lay the sheet on the bed of gravel or sand, maintaining a minimum gap of 1 cm or wider
- 3- Use a rubber hammer to eliminate any unevenness
- 4- Fill in the joints between the sheets with gravel or sand to provide greater stability to the surface



- A. Tile
- B. Fine gravel or sandy laying bed
- C. Concrete screed (may include electro welded mesh)
- D. Reinforcement layer
- E. Concrete screed
- F. Loose stone foundation (gravel)
- G. Soil

## TECHNICAL SPECIFICATION

TECHNICAL DETAILS	STANDARD AS PER ISO-13006/EN176 GROUP BIa	MEAN VALUE OF OUR FULL BODY VITRIFIED TILES	METHOD OF TEST
Deviation In Length & Width	±0.60%	±0.10%	ISO-10545-2
Deviation In Thickness	±5.00%	±2.00%	ISO-10545-2
Straightness Of Sides	±0.50%	±0.10%	ISO-10545-2
Rectangularity	±0.60%	±0.10%	ISO-10545-2
Surface Flatness	±0.50%	±0.10%	ISO-10545-2
Glossiness	Gloss Meter	Min. 90%	Glossmeter
Water Absorption	≤0.50%	E≤0.05%	ISO-10545-3
Breaking Strength	1300 N	2000 N	ISO-10545-4
Abrasion Resistance	Max. 175mm <sup>3</sup>	Max. 145mm <sup>3</sup>	ISO-10545-6
Moh's Hardness	Min. 6	≥ 6*	EN 101
Frost Resistance	Frost Proof	Frost Proof	ISO-10545-12
Thermal Shock	No Damage	No Damage	ISO-10545-9
Moisture Expansion	Nil	Nil	ISO-10545-10
Thermal Expansion	<9x10 <sup>-6</sup>	≥ 6 x 10 <sup>-6</sup>	ISO-10545-8
Resistance of House Hold Chemical	No Damage	No Damage	ISO-10545-13
Stain Resistance	Resistance	Resistance	ISO-10545-14
Slip Resistance (friction Co Efficient)	> 0.40	> 0.40	ISO-10545-17

### DISCLAIMER :

Icon reserves the right to delete & amend either totally or partially, any of the colors, shapes, sizes, references and other technical specifications contained in this catalogue at anytime. The colors of tiles shown in this catalogue are purely illustrative and limited to printing process. Please refer actual sample before final selection. The details of sizes, colors and references should be verified for typographical errors.

## PACKING DETAILS

	SIZE	Pcs. / Box	Weight / Box (Approx.)		Coverage Area / Box	
			Polished	Matt		
<b>FULL BODY</b>	600 x 1200 mm	2 pcs.	27 Kg	29 Kg	15.5 / Sq. Feet	1.44 / Mtr <sup>2</sup>
	600 x 600 mm	4 pcs.	26 Kg	28 Kg	15.5 / Sq. Feet	1.44 / Mtr <sup>2</sup>
<b>STEP</b>	300 x 1200 mm	3 pcs.	23 Kg	24 Kg	11.63 / Sq. Feet	1.08 / Mtr <sup>2</sup>
	300 x 900 mm	4 pcs.	22 Kg	23 Kg	11.63 / Sq. Feet	1.08 / Mtr <sup>2</sup>
<b>RISER</b>	200 x 1200 mm	3 pcs.	14 Kg	15 Kg	7.75 / Sq. Feet	0.72 / Mtr <sup>2</sup>
	200 x 900 mm	4 pcs.	16 Kg	17 Kg	7.75 / Sq. Feet	0.72 / Mtr <sup>2</sup>