



BLUEART GRANITO PVT. LTD.

Paneli Road, 8-A, National Highway,
Nr. Dariyalal Resort, Morbi – 363 642 (Guj. INDIA.)

C : +91 – 89800 00211
+91 – 89800 00215

E : sales@blueart.in
bhavesh@blueart.in

Export Inquiry

C : +91 – 89804 75947
+91 – 89800 00604

E : expo@blueart.in



BALANCE
NATURE &
BEAUTY
WITH BLUEART



600 x
600 mm





Clay Art.

ABOUT US...

Blueart was founded in 2010. It manufactures products with a high technological content paying particular attention to the impact on the environment.

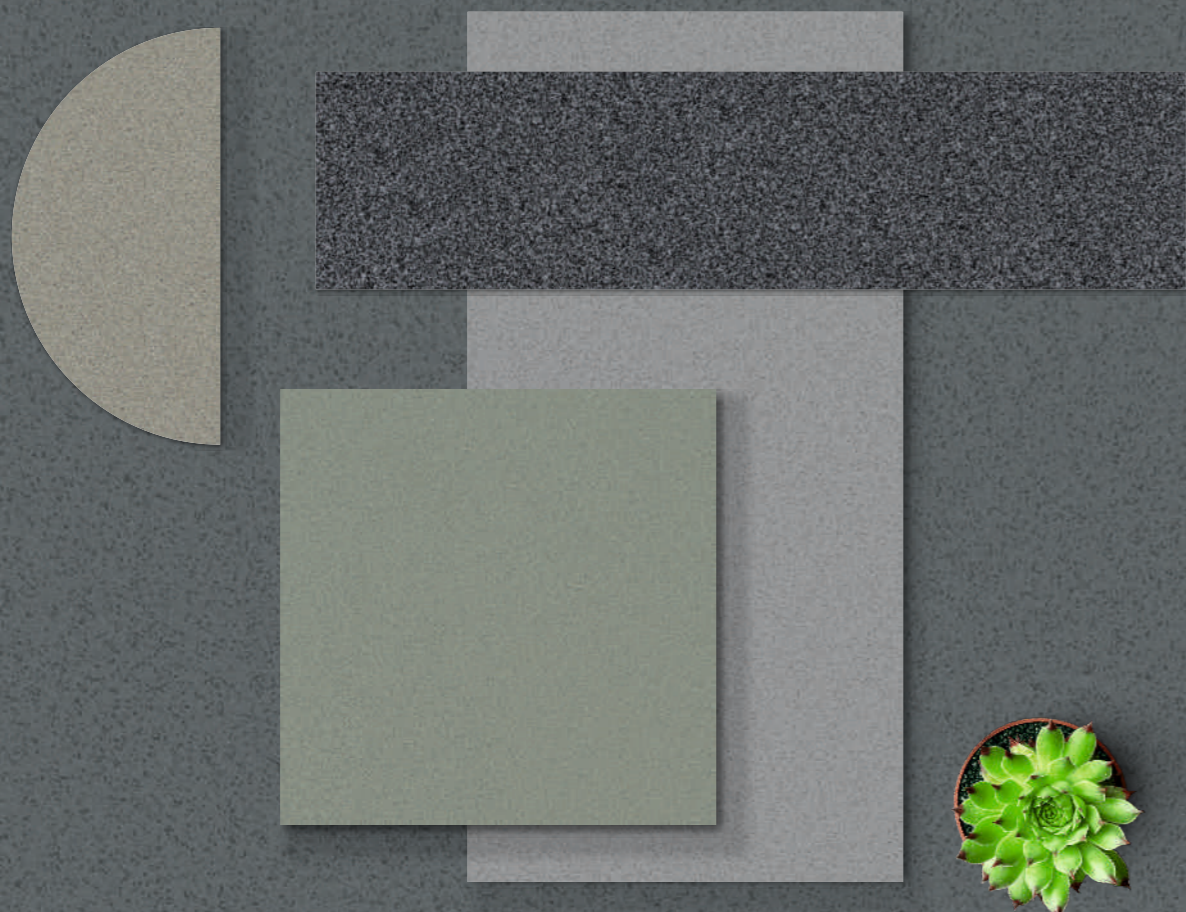
The company's added value is represented by the following international certifications: ISO 9001, ISO 14001, ISO 45001, CE.

Blueart the beating heart of cutting-edge technology since 2011.

High quality combined with unrivalled technology has enabled us to re-interpret some of the rarest, most refined and valuable products of nature, while also enhancing their technical and qualitative properties, saving many of these materials from oblivion. In this way, Blueart allows you to appreciate and take full advantage of some of the most prized materials available. Other hallmarks include exceptional functionality, hygiene, safety and long-lasting durability. The concept of the material is new and constantly being developed upon in the search for ultimate quality.

Blueart technologies are unique: they are devised, designed and implemented directly in-house at the company's own sites,

**FULL
BODY**
VITRIFIED TILES



AVAILABLE FORMAT

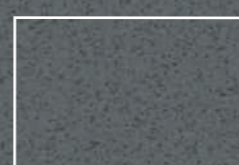


600 x 600 mm



600 x 1200 mm

SHAPE CUSTOMIZE

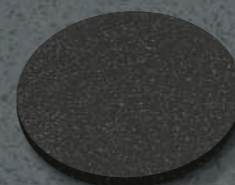


ANTI SLIP

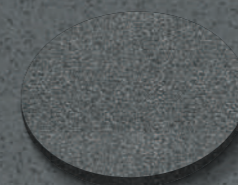
FULL BODY



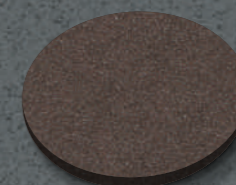
Sandy Series Color Range



BLACK



NERO



CHOCO



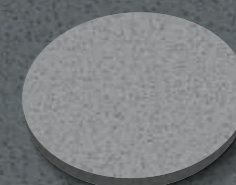
COPPER



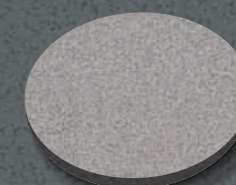
KOTA



VERDE



ROMAN



MOCHA



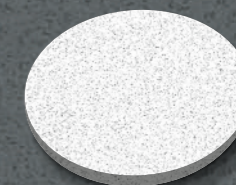
DOVE



BEIGE



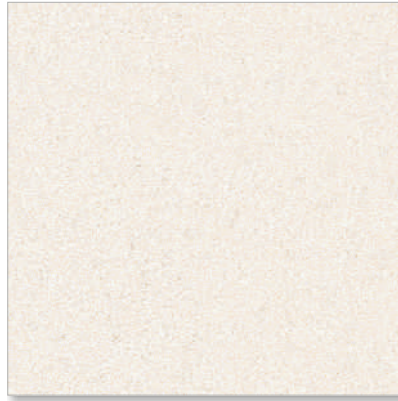
CREMA



WHITE

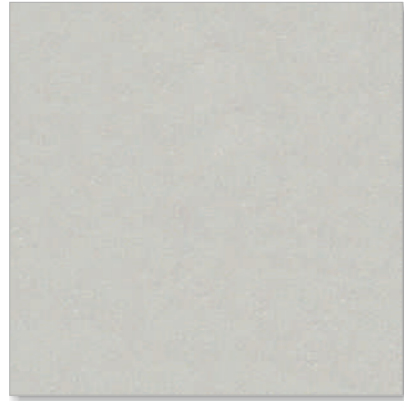
Light Series

SANDY CREMA



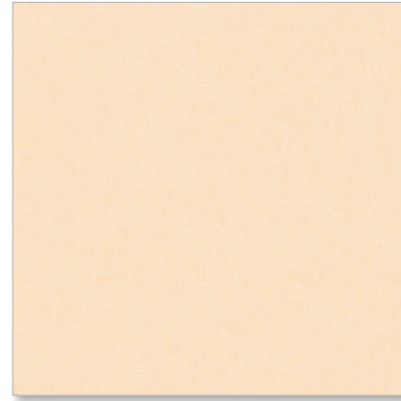
Surface
Satin / Polish

SANDY DOVE



Surface
Satin / Polish

SANDY BEIGE



Surface
Satin / Polish

SANDY ROMAN



Surface
Satin / Polish

SANDY MOCHA



Surface
Satin / Polish

Dark Series

SANDY CHOCO



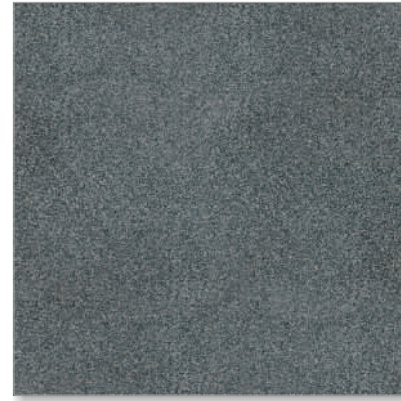
Surface
Satin / Polish

SANDY COPPER



Surface
Satin / Polish

SANDY NERO



Surface
Satin / Polish

SANDY KOTA



Surface
Satin / Polish

SANDY VERDE



Surface
Satin / Polish

Special Series

SANDY WHITE

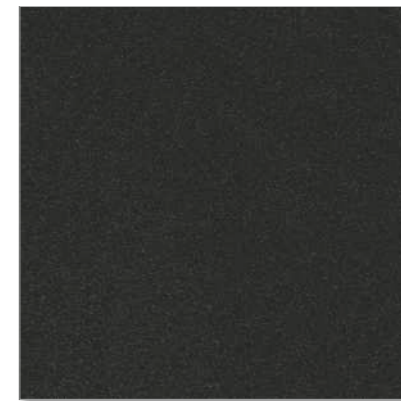
Special Series



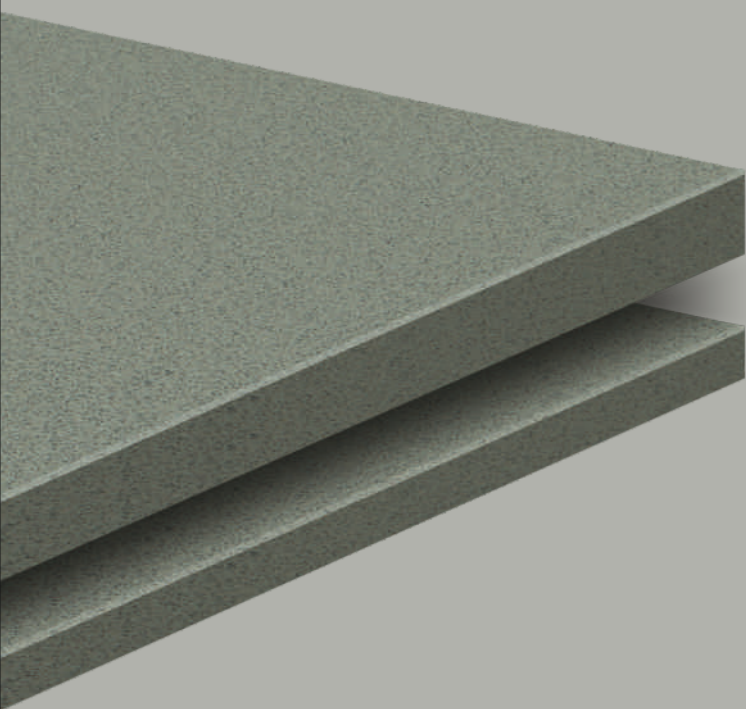
Surface
Satin / Polish

SANDY BLACK

Special Series



Surface
Satin / Polish



THICKNESS

← 15 mm

← 9 mm

APPLICATIONS



URBAN
CENTERS



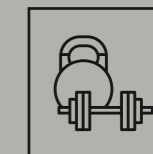
RESIDENTIAL
CENTRES



KITCHENS



HOSPITALS



SPORT
CENTRES



HOUSES
INDOOR



CLINICAL



BATHROOMS



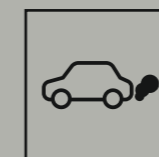
SPAS



SHOPPING
PLACES



EXTRENAL
WALL COVERING



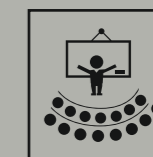
TRAFFIC
AREAS



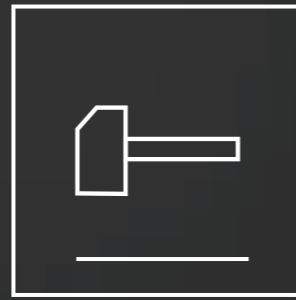
OUTDOOR



CENTRES FOR
CHILDHOOD



SCHOOLS



Solid

Solid, strong and uniform, it maintains its appearance even in the event of extreme wear and damage.



Safe, Clean, Fireproof

Sanitisable, resistant to acid, easy to clean, does not burn and does not release harmful substances



Highly Sustainable

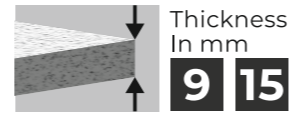
Porcelain stoneware reduced with maximum respect for the environment and for workers. Long-lasting and recyclable.

SANDY BLACK

Special Series



Surface
Satin / Polish



FORMAT

600 x
600 mm



SANDY BLACK & SANDY WHITE

Available Surface
Satin / Polish



Floor
Tiles



Wall
Tiles



Gloss
Finish



Matt
Finish

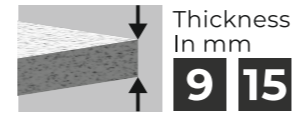


Water
Proof

 SANDY
Series

SANDY CHOCO

Dark Series



FORMAT

600 x
600 mm

Surface
Satin / Polish





SANDY CHOCO

Available Surface
Satin / Polish



Floor
Tiles



Wall
Tiles



Gloss
Finish



Matt
Finish

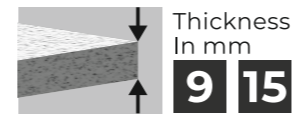


Water
Proof

 **SANDY**
Series

SANDY NERO

Dark Series



FORMAT

600 x
600 mm

Surface
Satin / Polish



SANDY NERO

Available Surface
Satin / Polish



Floor
Tiles



Wall
Tiles



Gloss
Finish



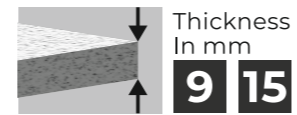
Matt
Finish



Water
Proof

SANDY COPPER

Dark Series



FORMAT

600 x
600 mm

Surface
Satin / Polish

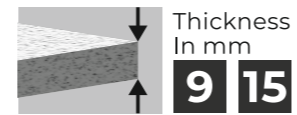
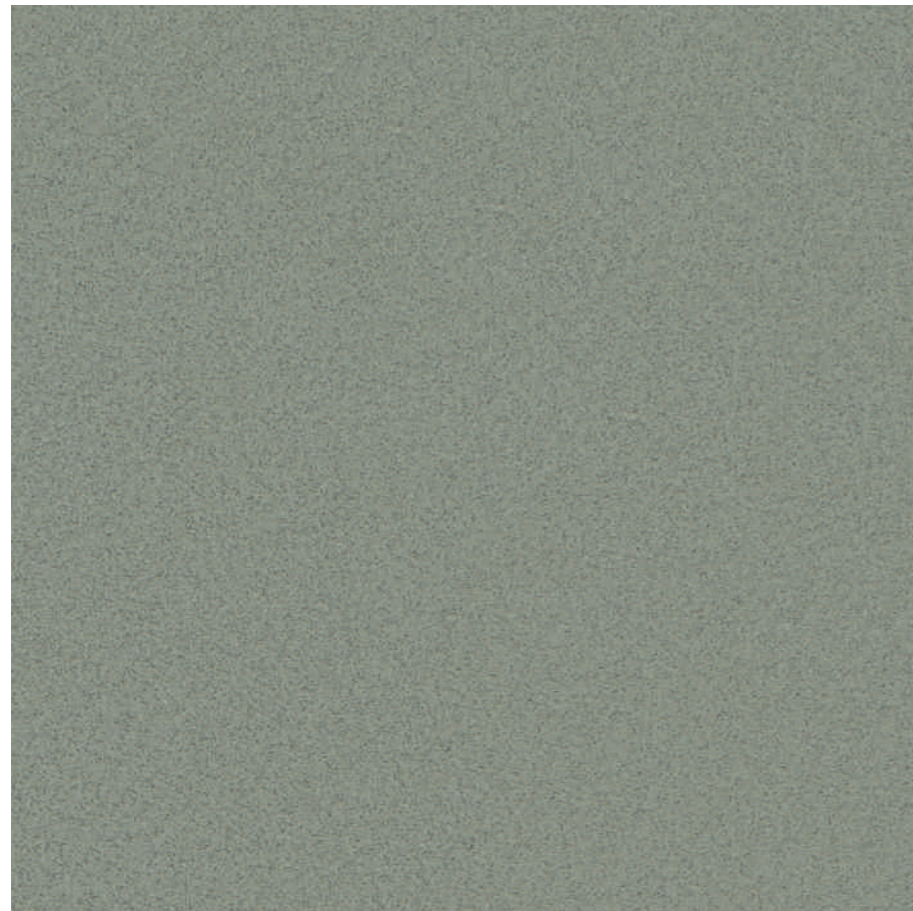




SANDY COPPER

SANDY KOTA

Dark Series



FORMAT

600 x
600 mm

Surface
Satin / Polish





SANDY KOTA

Available Surface
Satin / Polish



Floor
Tiles



Wall
Tiles



Gloss
Finish



Matt
Finish

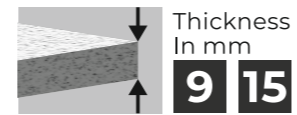
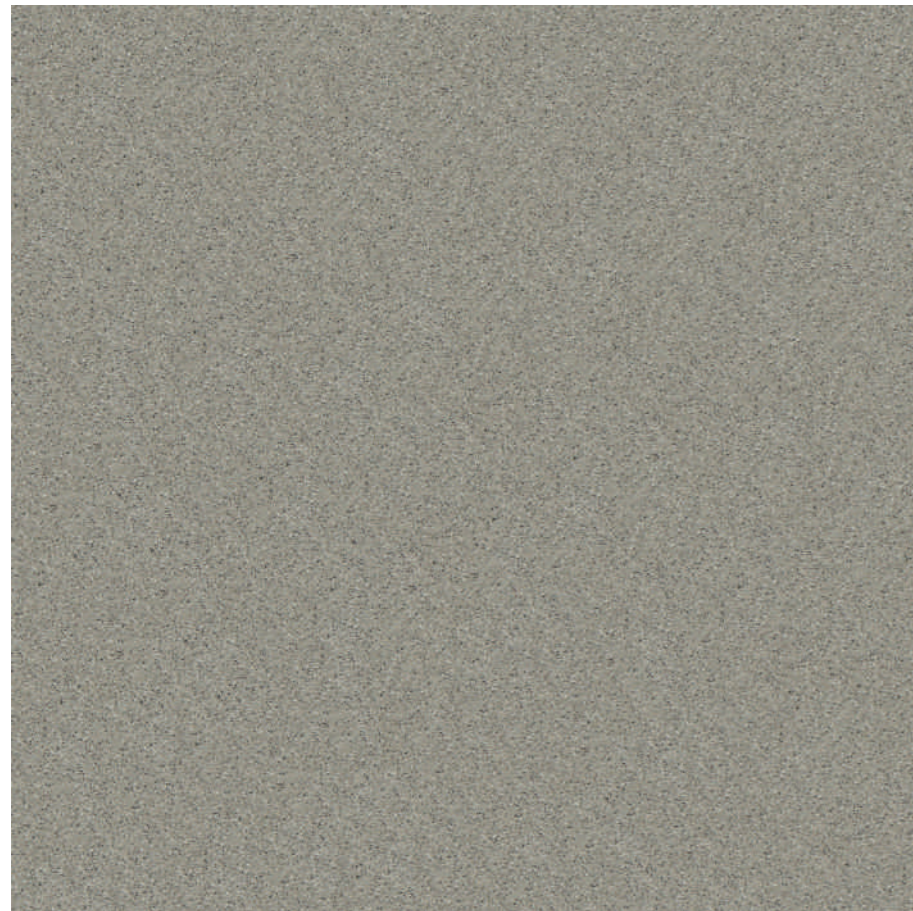


Water
Proof

 **SANDY**
Series

SANDY VERDE

Dark Series



FORMAT

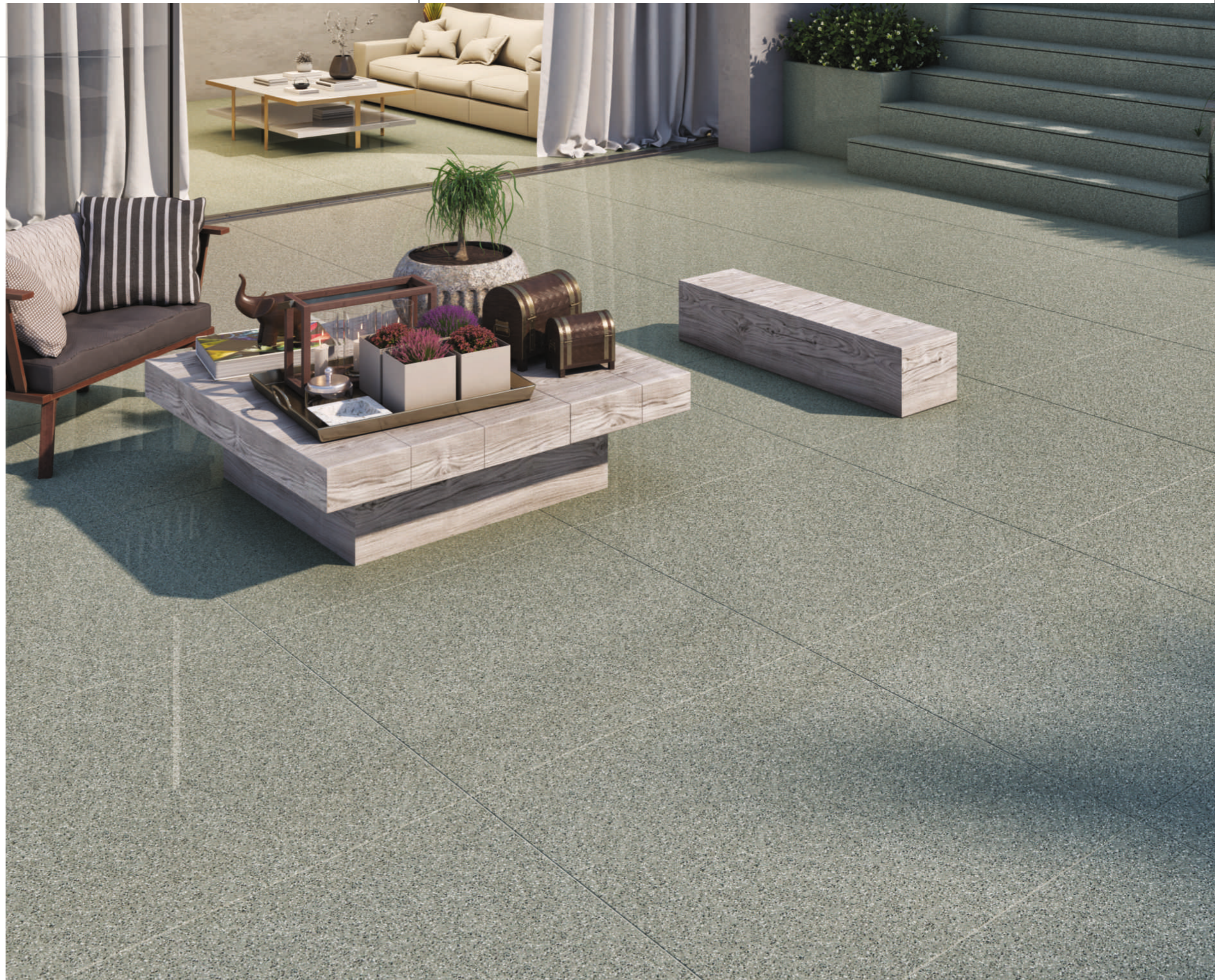
600 x
600 mm

Surface
Satin / Polish



SANDY VERDE

Available Surface
Satin / Polish



Floor
Tiles



Wall
Tiles



Gloss
Finish



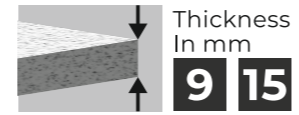
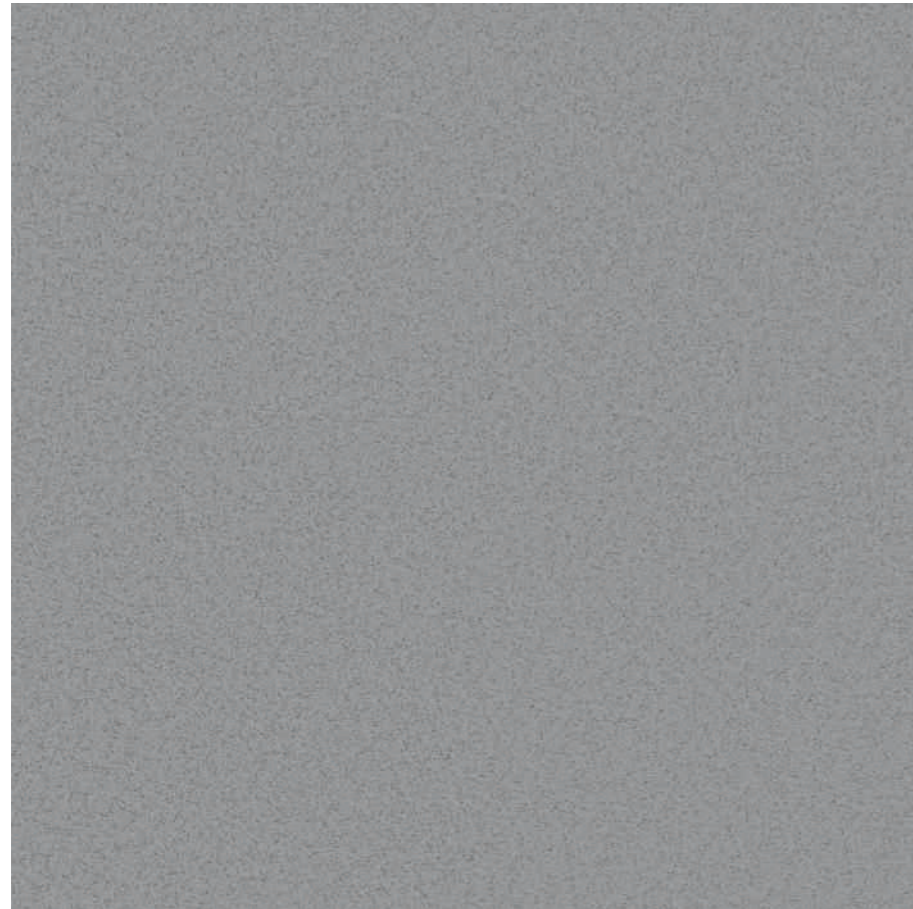
Matt
Finish



Water
Proof

SANDY ROMAN

Light Series



FORMAT

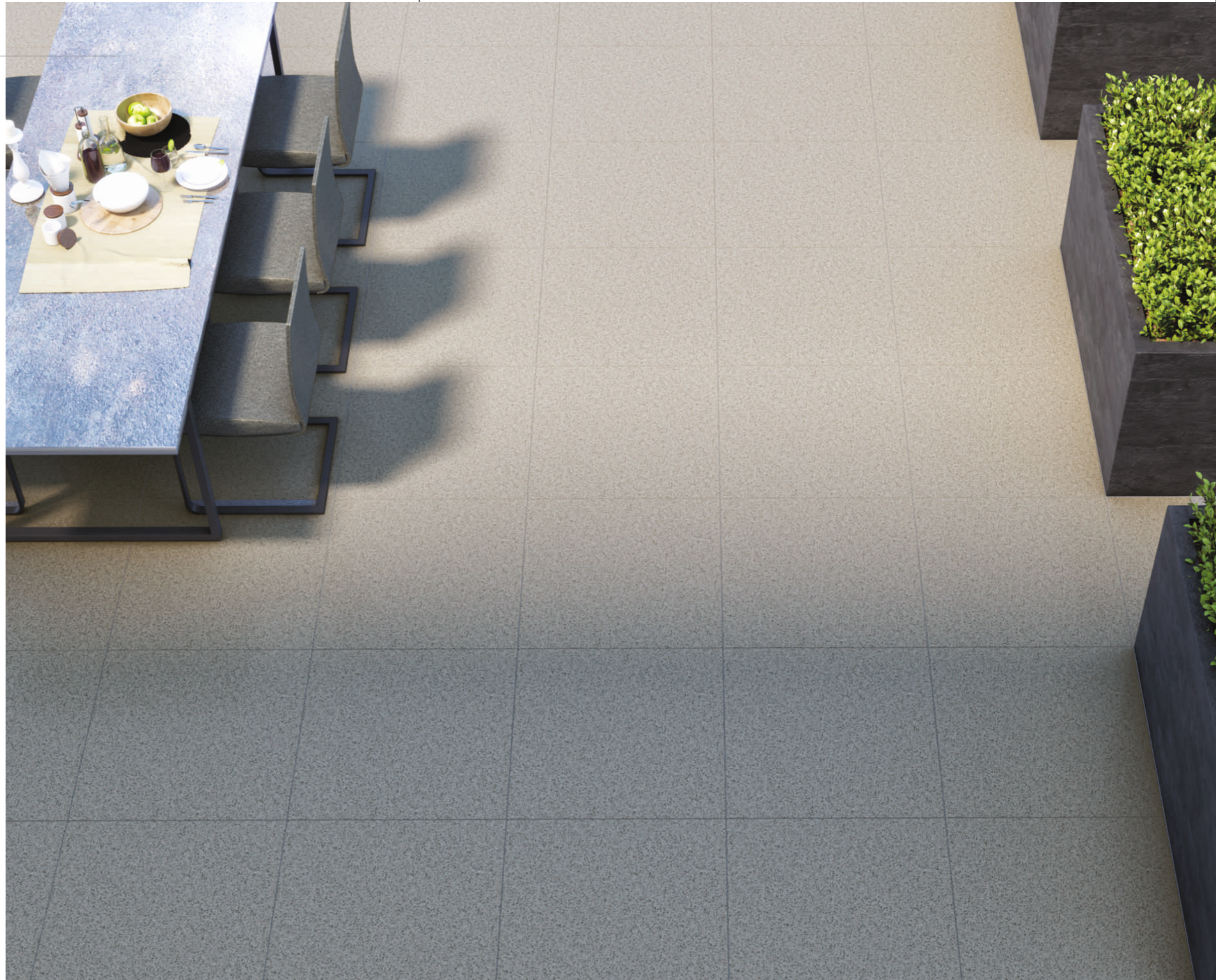
600 x
600 mm

Surface
Satin / Polish



SANDY ROMAN

Available Surface
Satin / Polish



Floor
Tiles



Wall
Tiles



Gloss
Finish



Matt
Finish

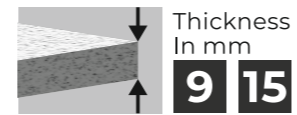


Water
Proof

 **SANDY**
Series

SANDY MOCHA

Light Series



FORMAT

600 x
600 mm

Surface
Satin / Polish





SANDY MOCHA

Available Surface
Satin / Polish



Floor
Tiles



Wall
Tiles



Gloss
Finish



Matt
Finish

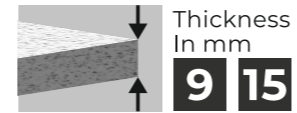


Water
Proof

 **SANDY**
Series

SANDY DOVE

Light Series



FORMAT

600 x
600 mm

Surface
Satin / Polish

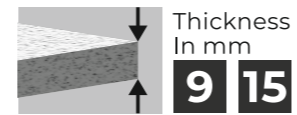
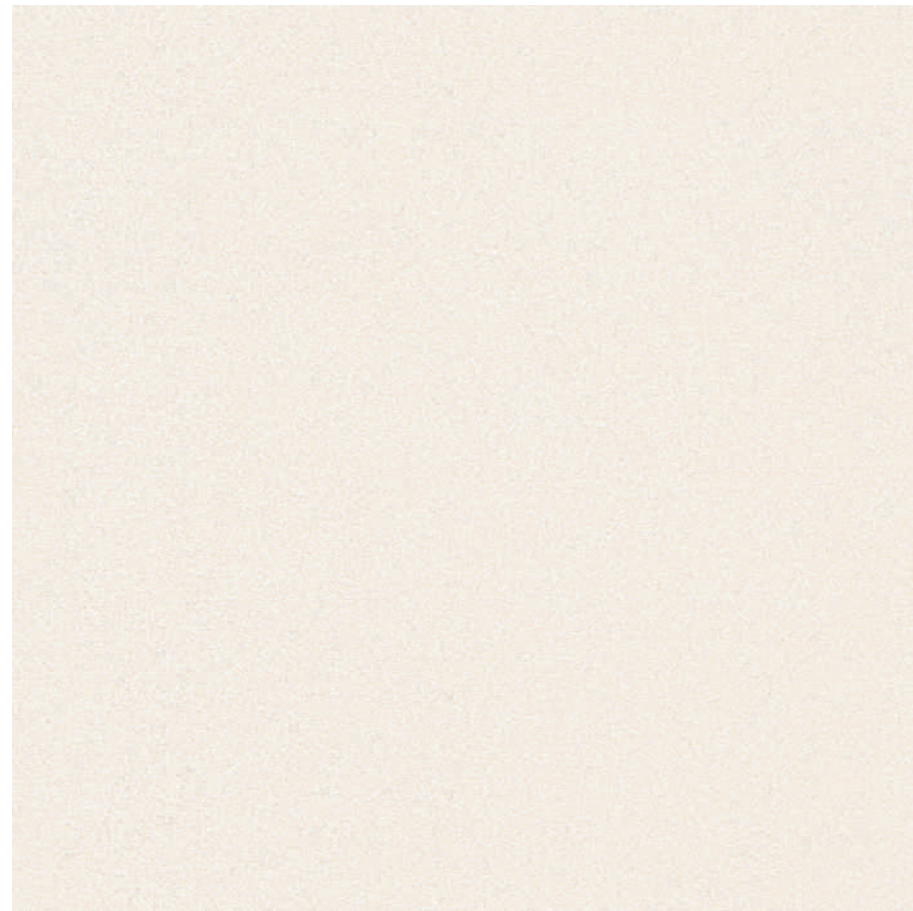




SANDY DOVE

SANDY CREMA

Light Series



FORMAT

600 x
600 mm

Surface
Satin / Polish

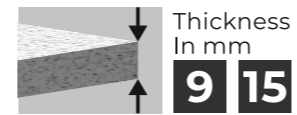




SANDY CREMA

SANDY BEIGE

Light Series



FORMAT

600 x
600 mm

Surface
Satin / Polish

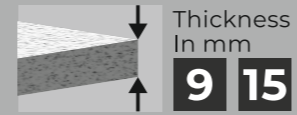




SANDY BEIGE

SANDY WHITE

Special Series



FORMAT
600 x
600 mm

Surface
Satin / Polish



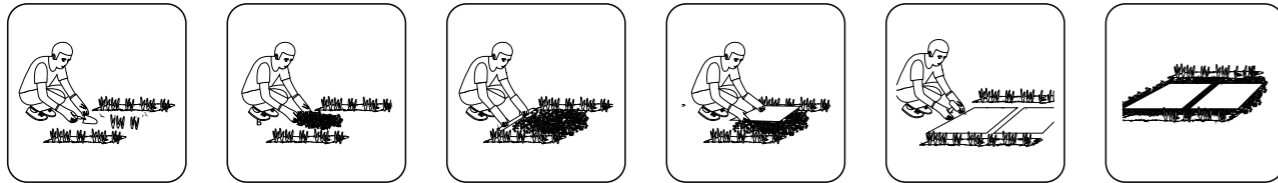


SANDY WHITE

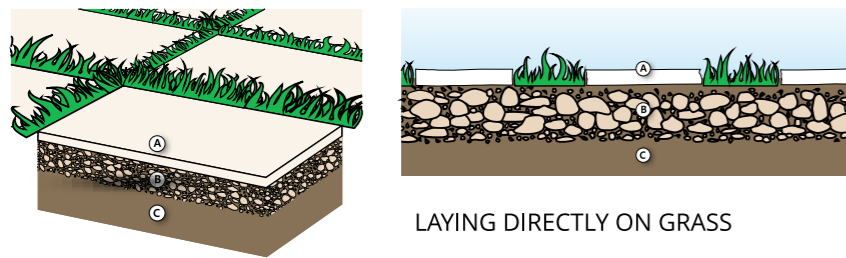
Direct Installation On Grass

Ideal for: Gardens, gazebos, walkways.

- 1- Remove the soil below the area where the sheet will be laid to a thickness of about 5-6 cm
- 2- apply gravel to a thickness of about 3-4 cm and compact the foundation
- 3- Rest the sheets - with at least 1 cm of gap - on the gravel bed and use a rubber hammer to eliminate any unevenness.



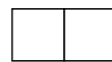
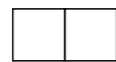
Installation On Gravel And Sand



LAYING DIRECTLY ON GRASS

Laying With Close Joints

Laying With Close Joints

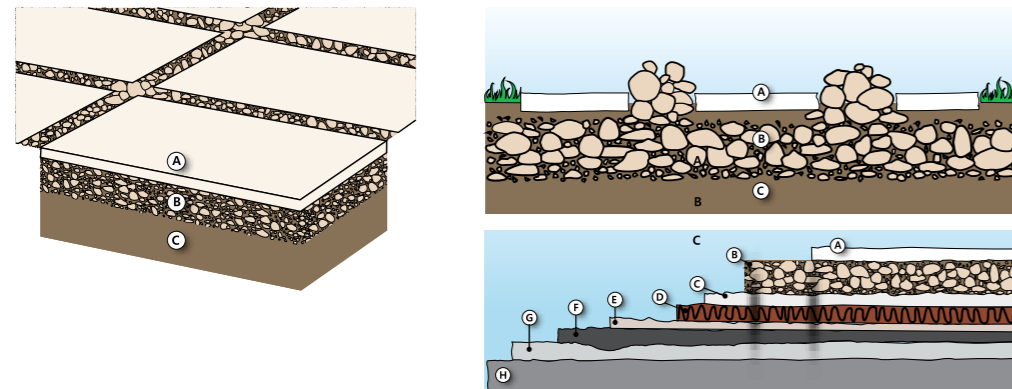


- A. Tile
- B. Fine gravel or sandy laying bed
- C. Ground

Installation On Gravel And Sand

Ideal for: gardens, patios, courtyards, pedestrian walkways, beach resorts, perimeter areas in pools.

- 1- Compact the level of the resting layer (sand or gravel)
- 2- Lay the sheet on the bed of gravel or sand, maintaining a minimum gap of 1 cm or wider
- 3- Use a rubber hammer to eliminate any unevenness
- 4- Fill in the joints between the sheets with gravel or sand to provide greater stability to the surface



- A. Tile
- B. Fine gravel or sandy laying bed
- C. Concrete screed (may include electro welded mesh)
- D. Reinforcement layer
- E. Concrete screed
- F. Loose stone foundation (gravel)
- G. Soil

TECHNICAL SPECIFICATION

TECHNICAL DETAILS	STANDARD AS PER ISO-13006/EN176 GROUP BIa	MEAN VALUE OF OUR FULL BODY VITRIFIED TILES	METHOD OF TEST
Deviation In Length & Width	±0.60%	±0.10%	ISO-10545-2
Deviation In Thickness	±5.00%	±2.00%	ISO-10545-2
Straightness Of Sides	±0.50%	±0.10%	ISO-10545-2
Rectangularity	±0.60%	±0.10%	ISO-10545-2
Surface Flatness	±0.50%	±0.10%	ISO-10545-2
Glossiness	Gloss Meter	Min. 90%	Glossmeter
Water Absorption	≤0.50%	E≤0.05%	ISO-10545-3
Breaking Strength	1300 N	2000 N	ISO-10545-4
Abrasion Resistance	Max. 175mm ³	Max. 145mm ³	ISO-10545-6
Moh's Hardness	Min. 6	≥ 6*	EN 101
Frost Resistance	Frost Proof	Frost Proof	ISO-10545-12
Thermal Shock	No Damage	No Damage	ISO-10545-9
Moisture Expansion	Nil	Nil	ISO-10545-10
Thermal Expansion	<9x10 ⁻⁶	≥ 6 x 10 ⁻⁶	ISO-10545-8
Resistance of House Hold Chemical	No Damage	No Damage	ISO-10545-13
Stain Resistance	Resistance	Resistance	ISO-10545-14
Slip Resistance (friction Co Efficient)	> 0.40	> 0.40	ISO-10545-17

DISCLAIMER :

Icon reserves the right to delete & amend either totally or partially, any of the colors, shapes, sizes, references and other technical specifications contained in this catalogue at anytime. The colors of tiles shown in this catalogue are purely illustrative and limited to printing process. Please refer actual sample before final selection. The details of sizes, colors and references should be verified for typographical errors.

PACKING DETAILS

	SIZE	Pcs. / Box	Weight / Box (Approx.)		Coverage Area / Box	
			Polished	Matt		
FULL BODY	600 x 1200 mm	2 pcs.	27 Kg	29 Kg	15.5 / Sq. Feet	1.44 / Mtr ²
	600 x 600 mm	4 pcs.	26 Kg	28 Kg	15.5 / Sq. Feet	1.44 / Mtr ²
STEP	300 x 1200 mm	3 pcs.	23 Kg	24 Kg	11.63 / Sq. Feet	1.08 / Mtr ²
	300 x 900 mm	4 pcs.	22 Kg	23 Kg	11.63 / Sq. Feet	1.08 / Mtr ²
RISER	200 x 1200 mm	3 pcs.	14 Kg	15 Kg	7.75 / Sq. Feet	0.72 / Mtr ²
	200 x 900 mm	4 pcs.	16 Kg	17 Kg	7.75 / Sq. Feet	0.72 / Mtr ²